



BROADCAST INSTRUCTIONS

Introduction:

These are the basic instructions to help you get setup for broadcasting live with us on **Sensimedia Network Radio**, along with the software you'll need to it. Please make sure to download the 2 files listed under "Software" to begin, and then follow the steps below, and if you still have any questions about the setup, contact admin@sensimedia.net.

Requirements:

- ▶ **High Speed Internet Access** (*DSL, Cable, etc.*): You will only need to provide the upstream to our server, which we will then relay to your listeners. High Speed is needed to provide and maintain a strong enough upstream at a decent bit rate without losing connection.
- ▶ **Microphone:** A microphone is needed for talking, announcing songs, shout outs, requests, etc. For the most part any microphone will due.

Software:

- ▶ **Nullsoft WinAmp:** You can download the most recent version of WinAmp from the following link: <http://members.sensimedia.net/utilities/winamp532.exe>
- ▶ **SHOUTcast DSP Plug-in:** Software which adds SHOUTcast broadcast ability to the WinAmp 5.x software. You can download this Plug-in from our server using the following link: <http://members.sensimedia.net/utilities/shoutcast-dsp-190.exe>

Bryan "Primo" Mendoza
Administrator (US)
admin@sensimedia.net

Gavin "Knockz" Campbell
Radio Administrator
knockz@sensimedia.net

Victor "Skrewface" Raymond
Administrator (EU)
admin@skrewfacesound.com

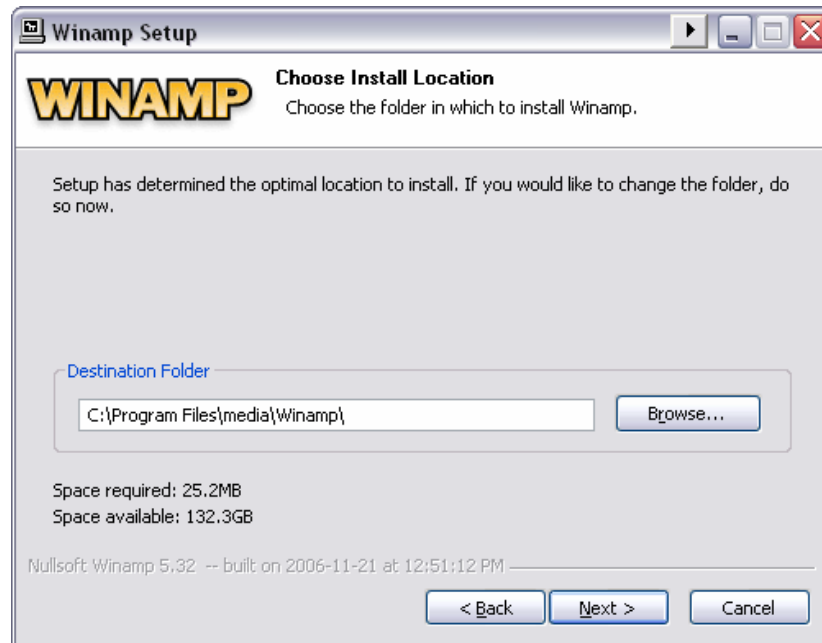
Sensimedia Network Radio
<http://www.sensimedia.net>

Sensimedia Network TV
<http://www.sensimedia.tv>

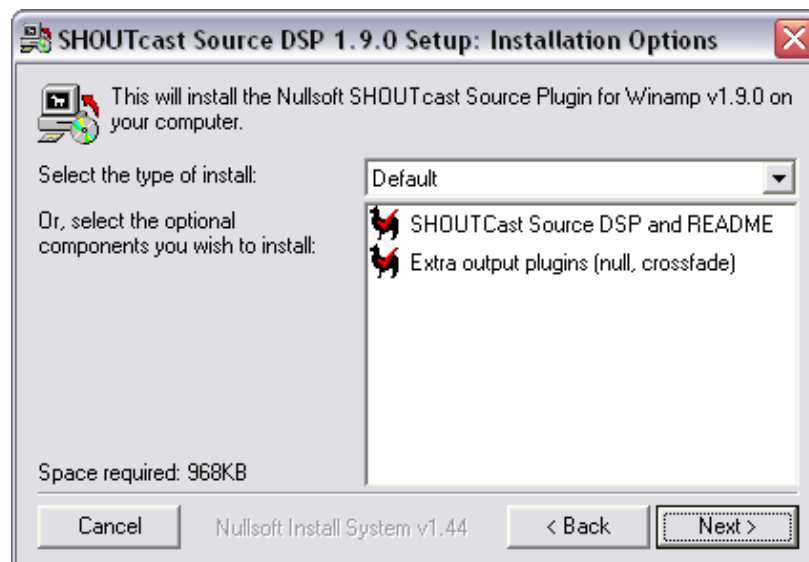
Installation:

Installation is very simple and shouldn't take more than a couple of minutes. Just make sure to install the DSP plug-in in the same directory that you put WinAmp in.

- ▶ Launch the **WinAmp** setup file and select the directory where you want to install it. After it installs and launches, close the program and proceed to the next step.



- ▶ Launch the **SHOUTcast DSP Plug-in** setup file. Make sure it's set to 'Default' for the type of install. When asked where to install the **SHOUTcast DSP Plug-in**, select the same directory you just installed WinAmp in.

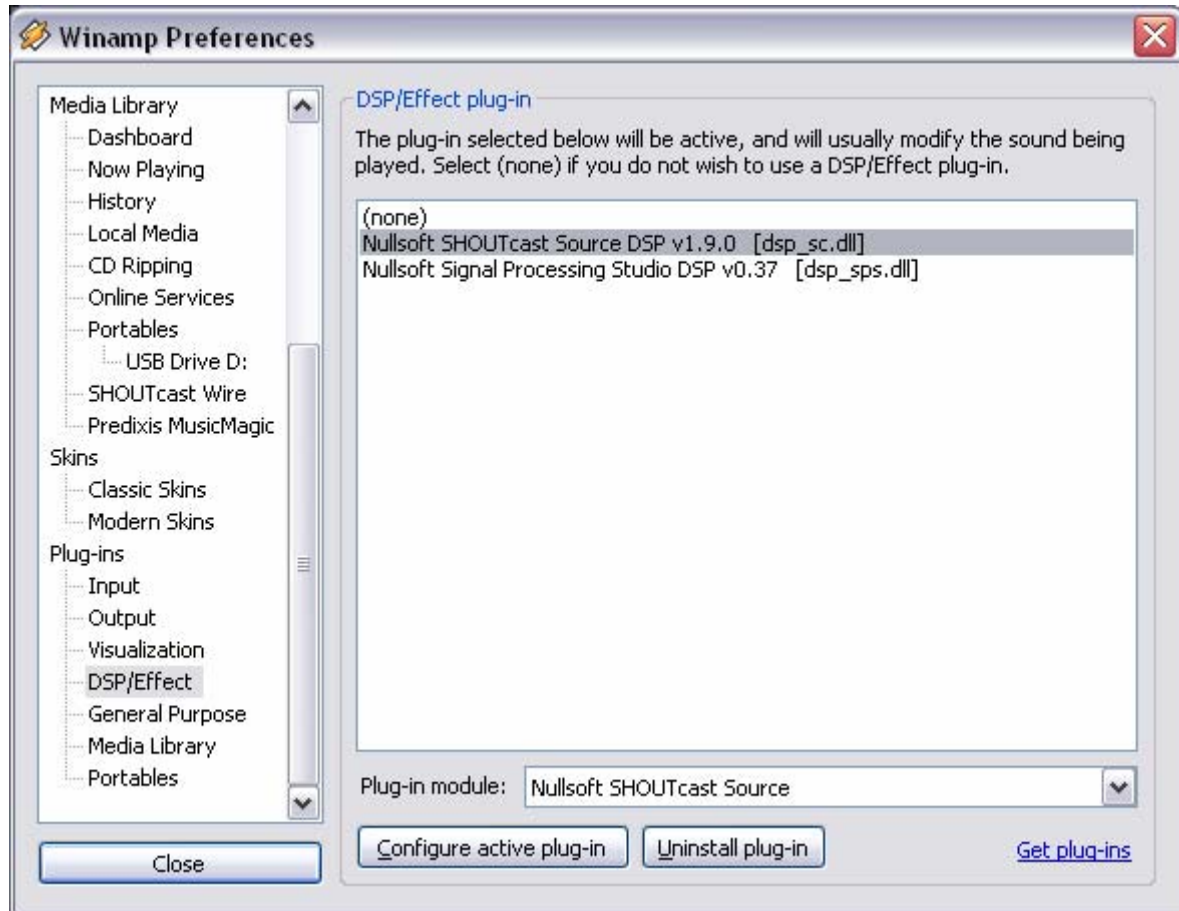


(Example: If you installed WinAmp to C:/Program Files/WinAmp/, you would also install the **SHOUTcast DSP Plug-in** to C:/Program Files/WinAmp/)

Configuration:

Now we'll configure the plug-in to communicate with our dedicated media servers, and setup the title and settings of your show that your audience will see.

- ▶ Launch WinAmp, press **Ctrl+P (Control + P)** to open the Preferences window, and select the **DSP/Effect** option on the menu to the left. You may have to scroll down to find it.



- ▶ On the right side, select "**Nullsoft SHOUTcast Source DSP v1.8.2b.**" This will give you a "**SHOUTcast Source**" window on your screen.

- ▶ On the “SHOUTcast Source” window, click on the Output tab and use the following settings:

Output Configuration

(Connection Button)

- ▶ **Host:** www.sensimedia.net
- ▶ **Port:** (will be assigned)
- ▶ **Password:** (will be assigned)
- ▶

Yellow Pages Configuration

(Yellowpages Button)

Sensimedia Title format

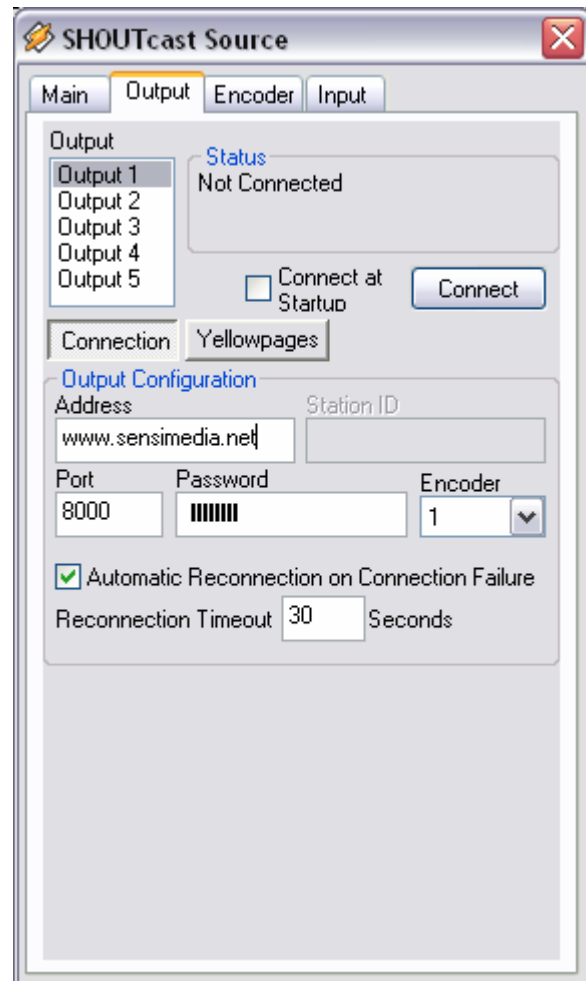
- ▶ DJ Name – Show Title
e.g. DJ Joe – Ruff Radio Show

Sensimedia Genre setting

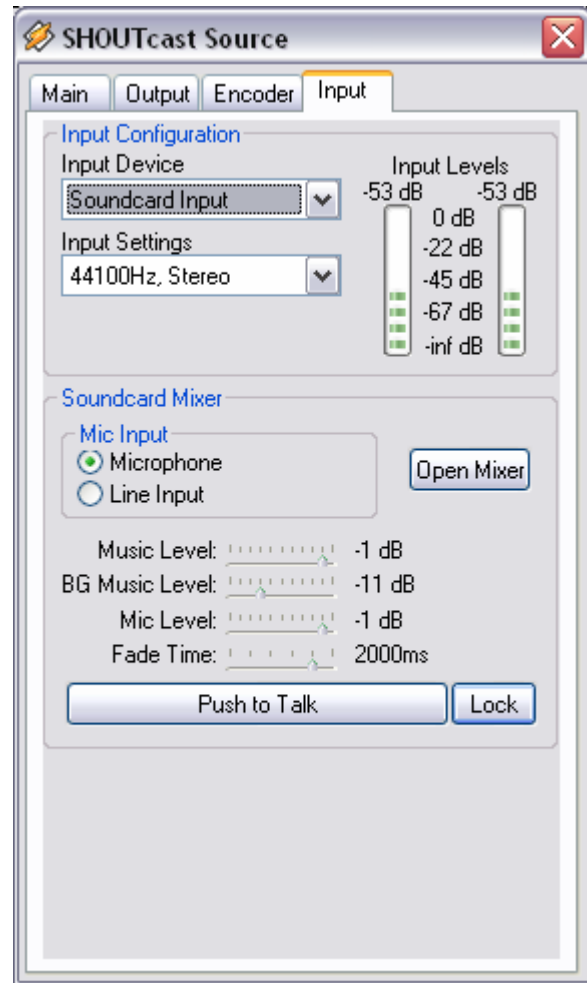
- ▶ Reggae, Dancehall, or Hip-hop depending on your show

- ▶ **Public Listing:** On

- ▶ **Sensimedia URL setting:**
<http://www.sensimedia.net>



- ▶ Still in the **SHOUTcast Source** window, click on the Input tab and select '**Soundcard Input**' from the **Input Device** drop down menu. We prefer you select Soundcard Input because you then have the option to use your microphone and the line in (for attaching other devices like turntables, cd players, etc.) feature.
- ▶ Now you will need to set a bitrate (the speed you send the stream to us), which is on the "**Encoder**" tab. Bitrate can vary and will depend on your connection. To accommodate both dialup and broadband users, we prefer using a bitrate setting of: **32kbps, 22.05kHz, Mono**



- ▶ You are now ready to broadcast. Please make sure to arrange with us a time to run a test broadcasts to make sure all of your settings and levels are correct and ready to go live.
- ▶ Here are a few things that you may find helpful.
 - **Sensimedia Network Jingles:**
Station ID's and Jingles by artists including Sean Paul, Beres Hammond, Bushman, and many more to be played during live shows.
 - **Sensimedia Jingles:** <http://members.sensimedia.net/drops/>
User: sensimedia Pass: assets
 - **Record Charts:**
Some broadcasters like to point out where a song is on a music chart, or perhaps you'd like to do your own "Top 10" feature. Here are some websites that provide helpful record charts.
 - **Billboard:** <http://billboard.com/bb/biz/yearendcharts/>
 - **MTV:** <http://www.mtv.com/charts/>
 - **Reggae Mania:** <http://www.reggaemania.com/radioshow/charts/>
 - **Reggae Train:** <http://www.reggaetrain.com/top20.asp>
 - **Reggae Vibes:** <http://www.reggae-vibes.com/top50/top50.htm>
 - **Underground Hip-hop:** <http://www.djbooth.net/dj-music-charts/>